

# LUXURY JOURNEY TO RWANDA & TANZANIA



**KAONEKA**  
*Safaris*

[www.kaonekasafaris.co.tz](http://www.kaonekasafaris.co.tz)

HANDCRAFTED BY THE TRAVEL EXPERT AT

**KAONEKA SAFARIS LIMITED**



[WWW.KAONEKASAFARIS.CO.TZ](http://WWW.KAONEKASAFARIS.CO.TZ)



## SAFARI HIGHLIGHTS

DAY	DATE	LOCATION	ACCOMMODATION	MEALS
1	02/06/2024	ARRIVAL KIGALI	KIGALI SERENA HOTEL	B & B
2-3	3-4/06/2024	VOLCANO N. PARK	BISHOP'S HOUSE	INCLUSIVE
4	5/06/2024	KIGALI – FLY TO NDUTU	NDUTU SAFARI LODGE	FULL BOARD
5-6	6-7/06/2024	NDUTU WOODLANDS	NDUTU SAFARI LODGE	FULL BOARD
7	8/06/2024	NDUTU - CENTRAL SERENGETI	SERENGETI FOUR SEASONS	INCLUSIVE
8-9	9-10/06/2024	CENTRAL SERENGETI	SERENGETI FOUR SEASONS	INCLUSIVE
10-11	11-12/06/2024	NGORONGORO CRATER	NEPTUNE NGORONGORO LODGE	INCLUSIVE
12-13	13-14/06/2024	TARANGIRE N. PARK	MPINGO RIDGE CAMP	INCLUSIVE
14	15/06/2024	TARANGIRE TO ARUSHA	KAHAWA HOUSE	FULL BOARD
15	16/06/2024	ARUSHA CITY	KAHAWA HOUSE	FULL BOARD
16	17/06/2024	ARUSHA TO JRO AIRPORT	KAHAWA HOUSE-FLY BACK HOME	HALF BOARD

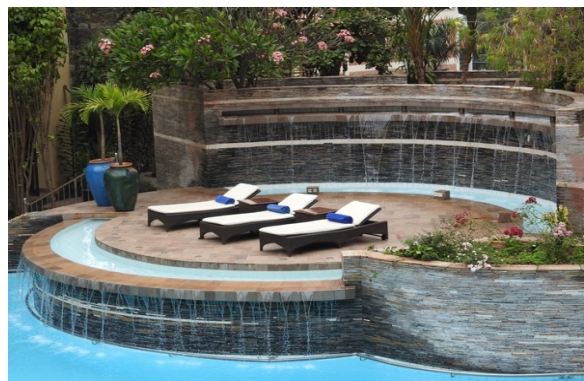
## ITINERARY

PREPARED FOR BESSETTE X 12 + 1 LEADER.

### DAY 1, ARRIVAL AT KIGALI INTERNATIONAL AIRPORT. 02/06/2024

Met upon arrival, you will be welcomed by your guide from Tanzania in the arrivals area and transferred to Kigali Serena Hotel. You will be assisted with check-in at your hotel for overnight.

Kigali Serena Lodge | Meals: Breakfast



## DAY 2, KIGALI CITY TOUR THEN DRIVE TO RUHENGERI 03/06/2024.

This day after breakfast you will be picked up and drive to the Genocide Museum for two hours visit, then town tour on your way to Hotel Rwanda for lunch. Late afternoon transfer to Ruhengeri Mountains.

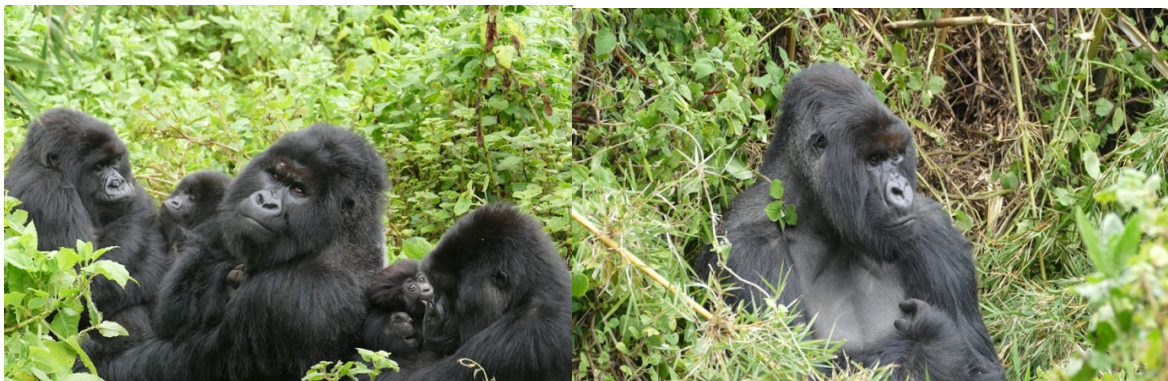
Bishop's House | All Inclusive



## DAY 3, TO VOLCANOS NATIONAL PARK 04/06/2024

This day you will have an early morning wakeup and have breakfast at the hotel, then depart to the Volcanoes National Park Headquarters. Here you will be allocated a group with a park ranger for your gorilla trek. The trekking can take several hours climb to altitudes excess of 7500 feet. Your guide will go through an orientation on gorilla etiquette before you start. You will return to the lodge for lunch and shower then relax.

Bishop's House | All inclusive





## DAY 4, RUHENGERI TO KIGALI FLY TO NDUTU WOODLANDS 05/06/2024

This day will be another early wakeup and after breakfast you will be transfer to Kigali International Airport for your private charter to Ndutu Woodlands National Park via Mwanza International Airport for Tanzania Immigration. Arrival Ndutu Woodlands for dinner. There will be a chance to see herbivores and some cats before you get to the Lodge.

**Ndutu Safari Lodge** | Meals: Breakfast, Lunch, Dinner



## DAY 6, FULL DAYS AT NDUTU WOODLAND AND PLAINS. 6-7/06/2024

Spend two full days at Ndutu woodlands and short glass plains searching for hungry Cheetah, Hyena, Lions following the Wildebeest and Zebra migration. It is perfect experiencing animals closer than anywhere else. Between two lakes, you will have an opportunity to see Flamingos at lake Ndutu and Hippos at Lake Masek. Your guide will arrange the perfect time to go out as he knows area well.

**Ndutu Safari Lodge** | Meals: Breakfast, Lunch, Dinner

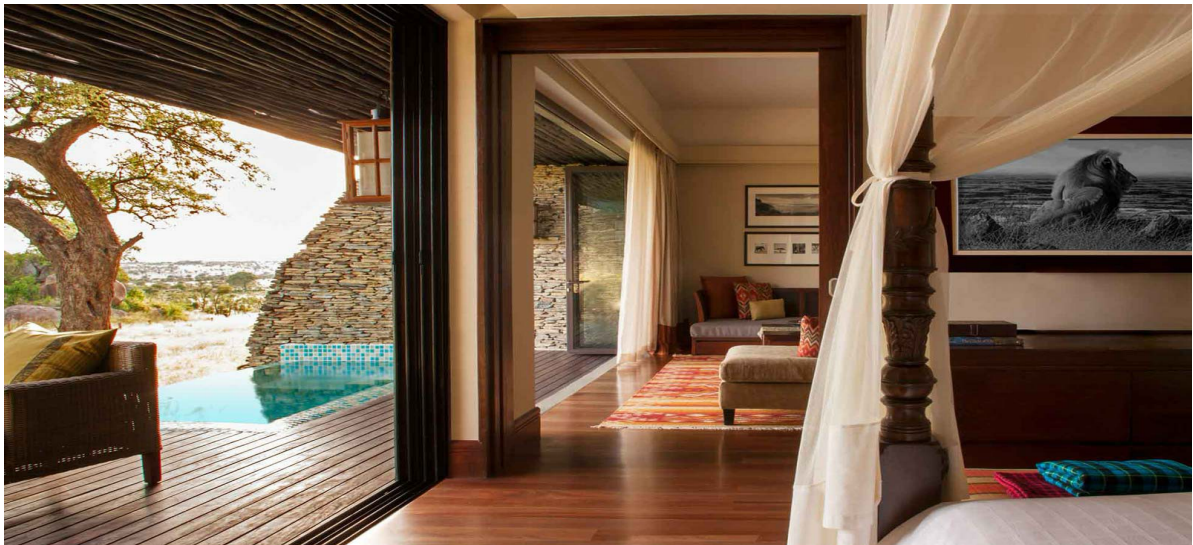




## DAY 7, NDUTU WOODLAND TO CENTRAL SERENGETI. 8/06/2024

Drive to Central Serengeti, along the way game drive towards Serengeti Four Seasons for lunch. After settling into your accommodation, immerse yourself at the swimming pool, sit back and relax while watching wild game coming to drink at the water hole. Each room also features a private veranda for game viewing, reading or simply absorbing the magical scenery around you. Join fellow guests for a sundowner, followed by an elegant dinner.

**Four Seasons Safari Lodge** | All inclusive



## DAY 8-9, FULL DAY AT CENTRAL SERENGETI. 9-10/06/2024

Spend two full days exploring the open savanna, woodlands and tree-fringed rivers of the Orangi, Retima and Seronera, where patience is rewarded with unique sightings: leopards, who retrieve kills from acacia branches high above, or elephants protecting their young from opportunistic lions. Game viewing is never dull in the Serengeti, especially when the dramatic annual Great Migration unfolds. During one of your mornings here, you may wish to enjoy an optional hot air balloon ride over the sprawling Serengeti.

**Four Seasons Safari Lodge** | All inclusive



## DAY 10, CENTRAL SERENGETI TO NGORONGORO CRATER. 11/06/2024

Drive to Ngorongoro Crater, pausing for a privately guided cross country stop at Shifting Sands then visit archaeologically rich Olduvai Gorge en route. Next visit a Maasai village and meet with an elder to learn about local culture and traditions. Witness a traditional beadwork demonstration as part of an artisan visit. Today you will have the opportunity to enter the Maasai classroom and observe how they teach the kids.

**Ngorongoro Neptune Lodge** | Meals: Breakfast, Lunch, Dinner



## DAY 11. FULL DAY AT NGORONGORO CRATER. 12/06/2024

Today, set out on a full-day game drive in Ngorongoro Crater, exploring the panoramic, short-grass prairies along the floor of this ancient volcanic caldera, home to rare black rhinos as well as lions, hyenas, and gazelles. The diverse and profuse wildlife dwelling within the encircling crater walls led this incredible "Lost World" to be named a UNESCO World Heritage Site. Also see colorfully garbed Maasai herdsman, who call the stunning landscape home. This afternoon after lunch proceeds with game drive then drive back to the lodge.

**Ngorongoro Neptune Lodge** | Meals: Breakfast, Lunch, Dinner.





## DAY 12. NGORONGORO TO TARANGIRE NATIONAL PARK. 13/06/2024

Drive to Tarangire National Park arriving for lunch at your luxurious accommodations Mpingo Ridge Tented Camp. Mpingo's large tents are built on platforms raised decks overlooking acacia woodlands and Tarangire River. The layout has many scattered trees with resident herds of Elephant, wildebeest, Zebra, Impala, Warthog and Water Buck oftengrazing in camp. Wide panoramas of wooded savanna over Tarangire National Park. This evening you will seat back relax and enjoy the view.

**Mpingo Ridge Tented Camp** | All inclusive



## DAY 13, FULL DAY AT TARANGIRE NATIONAL PARK. 14/06/2024

Today Explore Tarangire National Park back dropped by the spectacular, rust hued Great RiftValley. At Tarangire, find a stunning concentration of animals — herds of elephants, impalas and zebras. Look too for pythons and the twitching tails of leopards, who hide high above in sausage and acacia trees. Stop for lunch at Matete or Silale plains picknick site then after lunch proceed with game drive on your way back to camp.

**Mpingo Ridge Tented Camp** | All inclusive





## DAY 14. TARANGIRE TO ARUSHA CITY 15/06/2024

After breakfast drive to the bustling Arusha city, stop at Culture Centre for a quick look at the multicultural centre, lunch at Private Residence. After lunch, you will drive to Kahawa House for check in for dinner and overnight.

**Kahawa House** | Meals: Bed & Breakfast.



## DAY 15. ARUSHA CITY TOUR 16/06/2024

Today you will have the opportunity to shop and visit Culture Center Museum in a relaxed environment, after shopping and visit Culture Center you will drive to Shanga Shanga the social enterprise, which employs people with disabilities where they create unique and high-quality handmade jewelry, glassware and homewares incorporating recycled material. Return to the hotel for lunch and rest for the afternoon enjoying pool and surrounding of Kahawa House.

**Kahawa House** | Meals: Bed & Breakfast.



## DAY 16. ARUSHA TO KILIMANJARO AIRPORT. 17/06/2024

Today you will have an opportunity for a quick city tour and the history museum of Tanzanite. Return for lunch to the Kaha, day room use at Kahawa house and final packing. Rest until 5 pm when you will be pickup and transferred to Kilimanjaro International Airport (JRO) for your check in with KLM and your departure back home.



**END OF SAFARI ~**

**WELCOME TO EAST AFRICA – TANZANIA AND RWANDA**

### **COST INCLUDES:**

- PRIVATE SAFARI GUIDES AND TOUR LEADER
- PRIVATE TRANSPORT IN 4X4 WHILE ON SAFARI
- PRIVATE AIRPORT TRANSFERS AND ASSISTANCE
- PRIVATE CHARTER FROM KIGALI RWANDA TO SERENGETI TANZANIA
- FLYING DOCTOR INSURANCE
- ACCOMMODATION ON BED AND BREAKFAST KIGALI SERENA
- ALL INCLUSIVE AS INDICATED ON SAFARI HIGHLIGHTS & ITINERARY
- CITY TOUR OF KIGALI
- SINGLE ENTRY GORILLA PERMITS, NATIONAL PARKS ENTRY FEES



AND ALL GOVERNMENT TAXES

**COST EXCLUDES:**

- INTERNATIONAL FLIGHTS TICKETS & VISA ENTRY FEES TO RWANDA, TANZANIA
- PERSONAL INSURANCE & ANY ITEM NOT SPECIFIED ABOVE
- TIPS AND GRATUITY TO SAFARI GUIDES, GORILLA PARK RANGER, PORTERS & HOTEL STAFF.
- 
- **NOTE:** US DOLLAR BELOW 2006 BILLS ARE NOT ACCEPTED TO EITHER OF THESE COUNTRIES

**PLEASE TELL US**

- **YOUR PREFERENCES AND DIETARY & RESTRICTIONS**

- **SAFARI PACKING LIST**

- Light colored clothing. Beige, Green, or Neutral colors
- Hat
- Sandals
- Running shoes
- Sunscreen and Sunglasses. If you wear glasses bring a spare set
- Light rain jacket
- Fleece or warm sweater - evening can be cool depending on location and time of year.
- Swimsuit
- Good Binoculars
- Personal Medication
- Evening is casual attire.
- **DO NOT - Wear bright clothes, Perfume or cologne.**

- **PREPARING FOR THE GORILLA SAFARI**

- 

- **CLOTHES**

- Very light, flexible waterproof walking shoes with good tread (preferably worn in a little).
- Correct socks to go with these shoes. 2 pairs since one may be wet/muddy after first climb.
- Light Gortex rain proof jacket with hood/pants in green or beige
- Long pants. Comfortable bramble proof pants.
- Long Sleeved T shirts or comfortable long sleeved Chamois/bramble shirt.
- A Pair of work duty gloves are essential. (You may be crawling on your hands and knees).
- Gaters, if you have them. These cover the bottom of your pants and top of boots, hooking into your laces to prevent water/mud seeping into your boots from the top.



- Note: Rain jackets, gloves and garters are available to borrow from the lodge. The rain gear may not be very fashionable, but it is functional and will keep you from having to bring those items in your luggage if you don't mind using pre-used items of external clothing.

- **CAMERA EQUIPMENT**

- Small, foldable, and waterproof day pack for camera, lenses and water bottle.
- Camera/Film
- NO AUTO FLASH CAMERAS OR FLASH USE PERMITTED AT ALL IN PRESENCE OF GORILLAS.
- You might even consider having two camera bodies to avoid switching film type as the conditions change.
- Zip lock bag or waterproof cover for camera.
- iPhone also works well.
- All packs will be left on the ground with a guard when we make the final approach to be with the gorillas when we find them so be sure to be able to keep passports and essential documents in zip lock in a zipped pocket on your person.

**FIRST AID KIT**

- For anyone with motion sickness issues, bring whatever it is you use to combat this.
- Bring some ointment to administer to stinging nettle skin burns. Similar to poison
- We will be flying a small plane for a couple of hours, and we have some long windy drives while in Rwanda. Not everyone in the group needs to bring all these items; just enough to cater to anyone with need.
- **DO NOT-Wear bright clothes, perfume, cologne, or jewelry.**
- **Note:** These items are specifically for Rwanda Gorilla section. Obviously, one would want some additional standard items that one would have during normal travel. One would also wish to have some change of clothes for the evenings at the hotels. Nothing fancy. These items would obviously be able to be used on safari too.